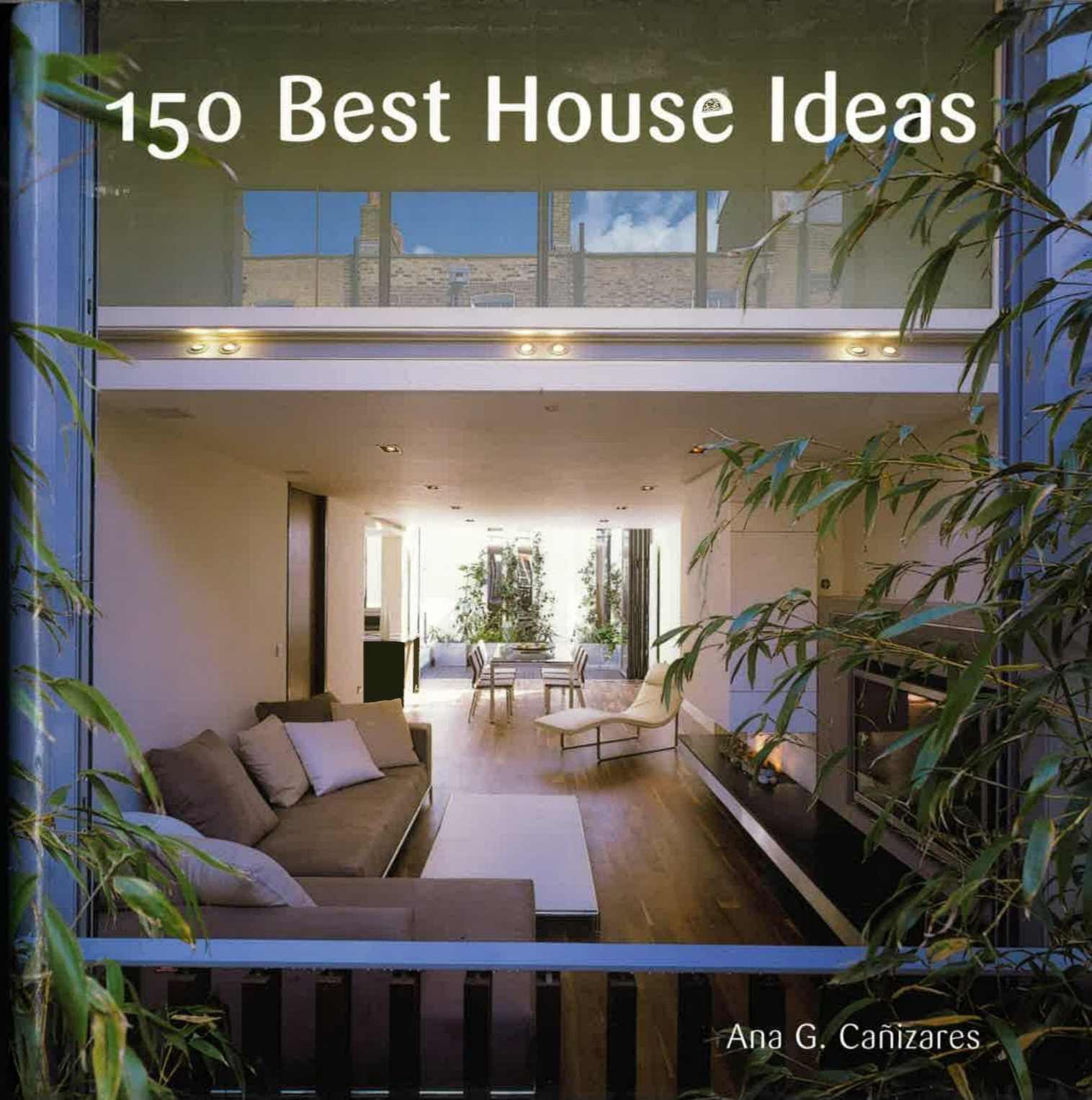
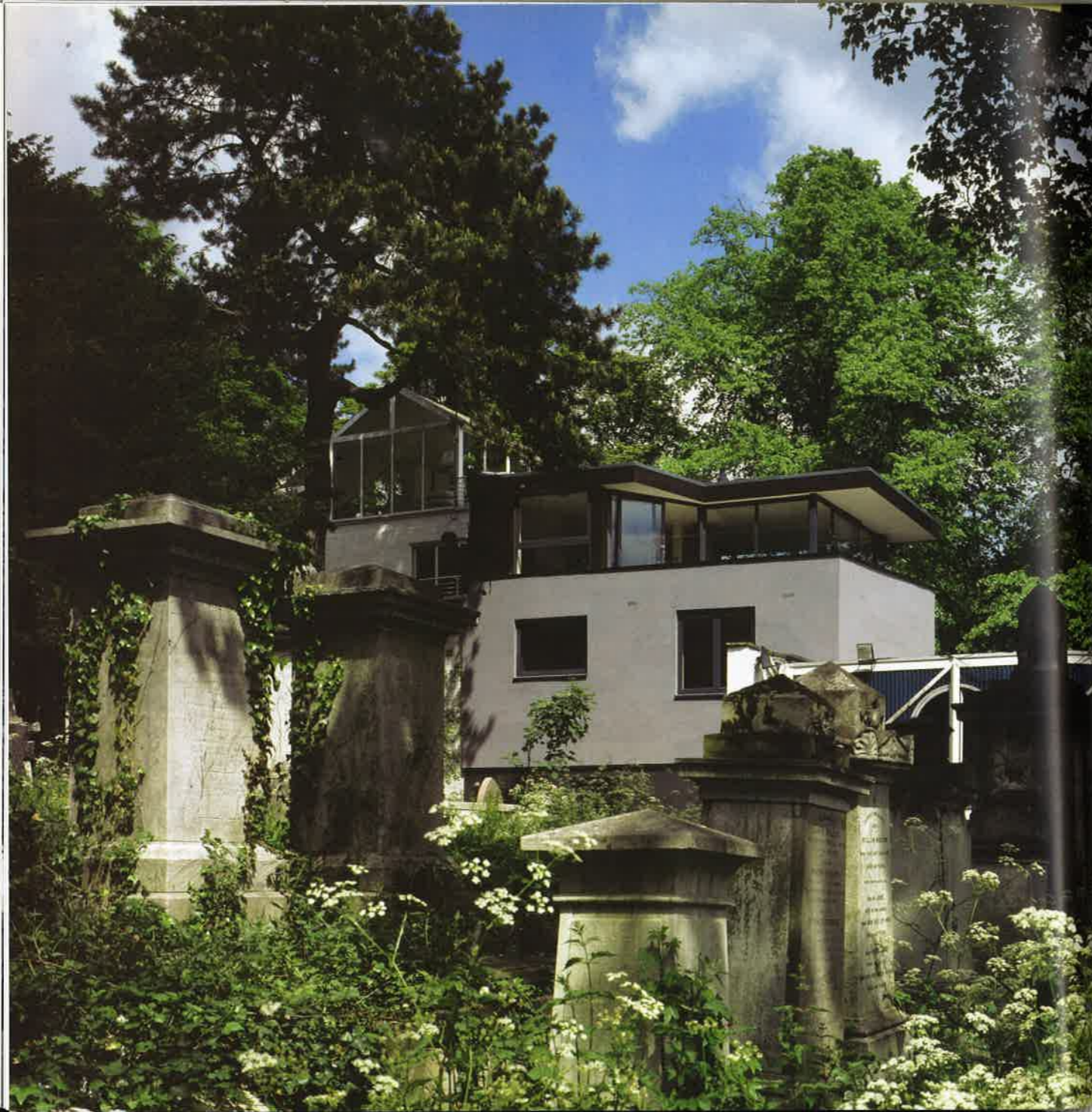


# 150 Best House Ideas



Ana G. Cañizares

The  
growin  
breakin  
are be  
not ex  
especi  
looking  
find an  
today  
150  
inspirat  
recentl  
some p  
employ  
aesthet  
of built  
respect  
the pro  
accordi  
budgets  
differen  
situated  
houses  
homeov  
maximia  
its locat



## Sylvanus House

Architect: bere:architects

Location: London, United

Kingdom

Date of construction: 2004

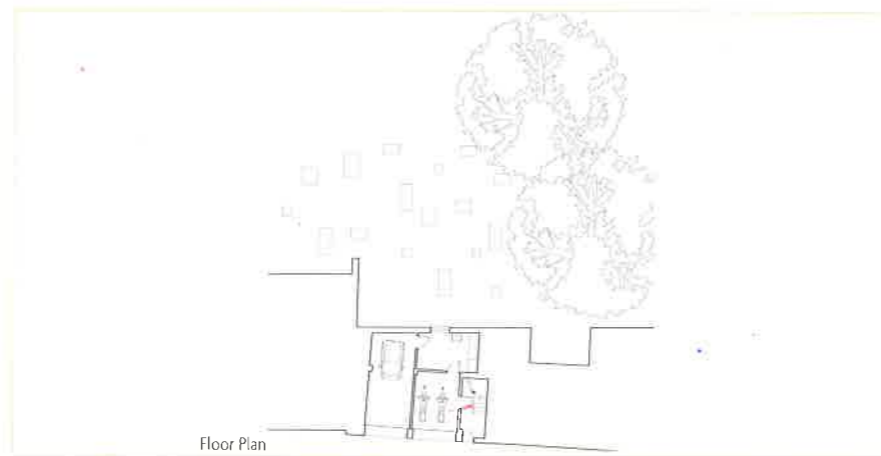
Photography: Peter Cook/VIEW

The peculiar location of this residence, situated on a sloping site within Highgate Cemetery in London, inspired the creation of a multilevel house with a unique composition and layout. The construction appears to gently twist and open up toward the winter sun, while a deeply overhanging roof forms a canopy to control the summer heat.

The world of growing and co-breaking and in are becoming in not exclusively especially true w looking to build t find an endless s today by contem 150 Best Hou inspirational hand recently complet some projects in employ simple t aesthetic design of building greer respect the surrou the projects pres according to their budgets to creat different environ situated, this book houses designed b homeowner or av maximize the pote location.



An unconventional layout presents asymmetrical lines, sloping ceilings, and an exterior terrace that casually looks out over the gravestones of Highgate Cemetery.



154 Sylvanus House



150 Best

The world of architecture is growing and continuing to break and innovate. New ideas are becoming increasingly important, not exclusively residential, especially true when looking to build their. Find an endless source today by contemporary. 150 Best House. Inspirational handbook recently completed. Some projects involve simple technical aesthetic designs. Some of building green. To respect the surrounding. The projects presented according to their budgets to create different environments. In different situations, this book shows houses designed by homeowner or architect to maximize the potential of its location.



40  
Sloping windows and angled lines can create a dynamic effect in contrast to linear furnishings. The top floor terrace reveals glimpses across London, which at night shimmers magically through a veil of trees.