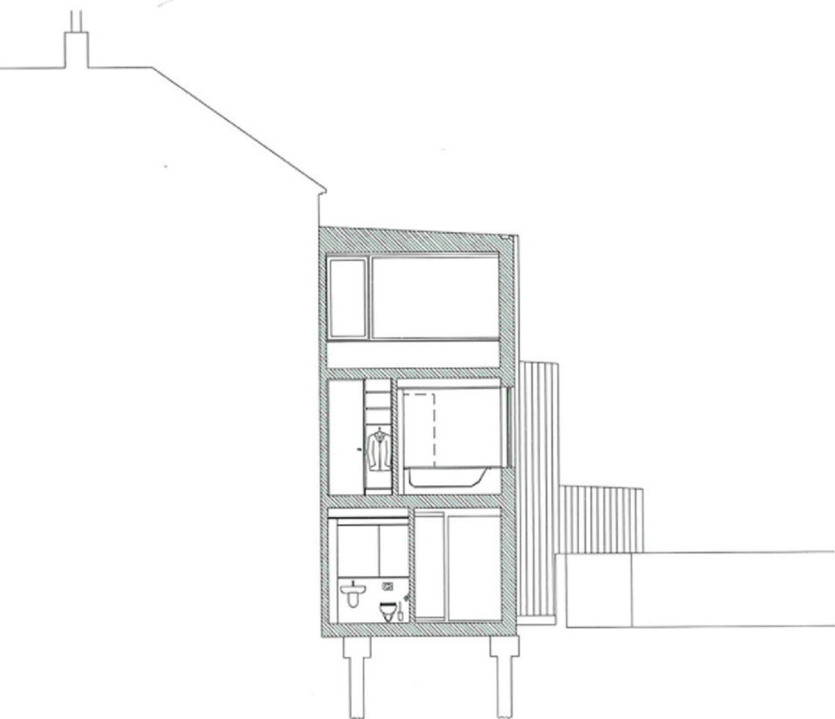


# FOCUS HOUSE

London, UK

Architect bere:architects

Building footprint 70m<sup>2</sup> / 753ft<sup>2</sup>; site area: 174m<sup>2</sup> / 1,873ft<sup>2</sup>



Compared to its tall, brick-built Victorian neighbours, Focus House in north London is a dynamic, zinc-sheathed flash of a building. It is also an exemplar of environmentally responsible, low impact twenty-first-century construction.

bere:architects' client bought the small triangular parcel of land and adjacent Victorian town house in 2004. His plan was to live in the latter while building a new house on the former. Justin Bere's brief was to design a flexible, low-cost, low-maintenance property with a minimal carbon footprint.

The ground floor tapers from a width of seven metres (23 feet) at the rear to three metres (ten feet) on the west-facing street façade. It includes an open-plan ground floor with living areas suited to the requirements of a family of five. At the back, sliding doors lead into a small paved garden, which includes a second low-slung structure for study and recreation.

The first floor of Focus House comprises two bedrooms and a bathroom, all connected by a



2



1 Section looking west. The street-facing façade is only 3 metres (10 feet) wide.

2 South elevation.

3 In appearance, environmental performance and internal layout, Focus House is a world away from its Victorian neighbour.

4 The triangular site determined the shape of the house: in order to secure planning permission, the new house could not exceed the profile of its neighbours.



4